

# Bigstone Health Commission's Health priorities:

## Mental Health/Addictions Intergenerational impact of Indian Residential School

- Establish support programs & health initiatives to provide essential & needed mental health capacity to support BCN Families & Communities...
- To develop a multi-pronged healing strategy that supports community healing....
- To hold community engagement sessions to share resources & provide professional services and information to Survivors.....
- Commemorative activities and events for the community.
- Remembrance – Never to Forget the Survivors and the Children who didn't make it Home!



*Out on a picnic.....years ago.*

LAND SEARCHES: August 22-24, 2023, Elder/Survivor Gathering was held; additional and new areas identified for GPR for both St. Martin's and St. John's former residential schools to search for unmarked graves. Report is forthcoming in 2024.

### CONTACT US:

Phone: 780-891-3777  
 Toll Free: 1-877-767-7060  
 Email:

[helen.alook@bigstonehealth.ca](mailto:helen.alook@bigstonehealth.ca) &  
[sylvia.gambler@bigstonehealth.ca](mailto:sylvia.gambler@bigstonehealth.ca)

*If any part of this information brochure is a trigger to your emotional and mental well-being, counselling and crisis support is available to those who need it 24 hours a day, 7 days a week, through the National Indian Residential Schools Crisis Line at 1-866-925-4419 or Hope for Wellness Hotline at 1-855-242-3310 or online at [www.hopeforwellness.ca](http://www.hopeforwellness.ca)*



## CHIEF BIGSTONE

## BIGSTONE HEALTH COMMISSION INDIAN RESIDENTIAL SCHOOL INQUEST

WHEN WE BRING THE TRUTH HOME, WE CAN HONOR THE CHILDREN WHO LIVED IT & CREATE A HEALING TO WELLNESS JOURNEY FOR ALL THE SURVIVORS.



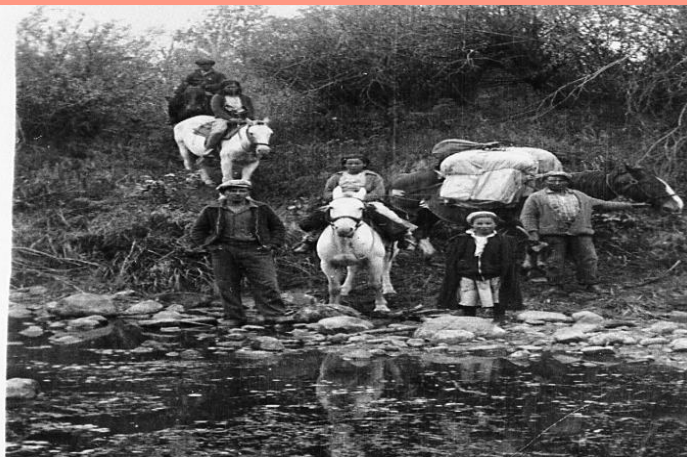
This is a community-based inquest to investigate missing children & burial information & to document family/community impacts on the forced removal of children from their Parents, families, communities. To fulfill this mandate, the Inquest will focus on 3 goals:

1. Missing Children & burial information is identified, collected, documented, archived and memorialized & commemorated;
2. The impact on families & communities is recorded, documented, archived and memorialized & commemorated;
3. Residential school data/information possessed by Bigstone Cree Nation is housed securely & accessed through formal protocols.

## WHERE WE ARE:

### Extensive Research Continues:

- Research gathered on 5 of 9 context papers;
- \* The Missionary Oblates of Mary Immaculate drafted & will be shared once completed.
  - \* Student attendance records from 1941 to 1955 (St. Martin's) and from 1941 to 1945 (St. John's) collected and to be analyzed.
  - \* Identify cause of death of Students – NCTR records has 18 deceased at St. Martin's & 8 deceased at St. John's (A few death certificates found so far).
  - \* Photo identification: 700+ photos collected and to be reviewed in detail with Elders, Survivors & Communities.
- We want to put a Name to every student & survivor that appears in the photos!
- Let your eyes help us see what we cannot!



Who are these boys of long ago??

## OUR PROCESS:

- ARCHIVAL RESEARCH
- COMMUNITY STORIES
- SURVIVOR STORIES
- STORIES FROM THE LAND
- PRESERVATION OF STORIES